

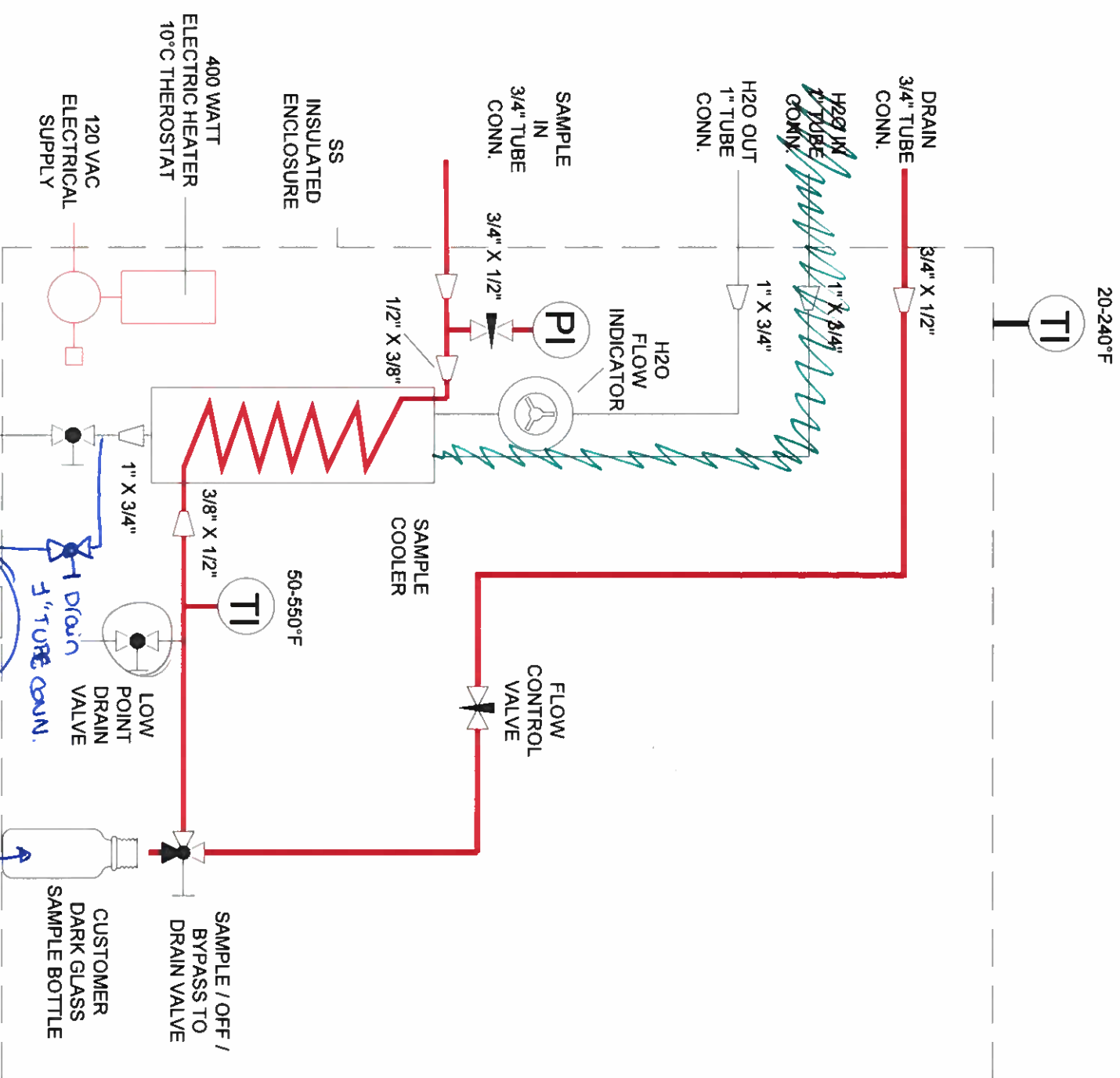
OPERATING INSTRUCTIONS

- 1) Verify:
 - A) SAMPLE/OFF/BYPASS TO DRAIN valve to OFF
 - B) FLOW CONTROL valve is CLOSED
 - C) SAMPLE BOTTLE in place
- 2) Turn SAMPLE/OFF/BYPASS TO DRAIN valve to BYPASS TO DRAIN position - and OPEN FLOW CONTROL valve to desired flow.
- 4) Allow enough time for representative sample to be present.
- 5) Turn SAMPLE/OFF/BYPASS TO DRAIN valve to SAMPLE and observe sample filling bottle.
- 6) When desired amount of sample is collected, tube SAMPLE/OFF/BYPASS TO DRAIN valve to OFF.
- 7) CLOSE FLOW CONTROL valve.
- 8) Install Cap on SAMPLE BOTTLE and remove from station.
- 9) This completes the sampling process.

NOTES: 1) ENCLOSURE HEATER INCLUDES 1" SPACING ALL SIDES FOR PROPER AIR FLOW
 2) ENCLOSURE HEATER LOCATED TO ENSURE PROPER WORKING ROOM FOR COLLECTING SAMPLE

TAG#: VP-S0-20

MAX DESIGN PRESSURE: 300 PSIG
 MAX DESIGN TEMP: 400°F
 WETTED PARTS: 316SS / PTFE / VITON
 HYDROTEST PRESSURE: 450 PSIG



Handwritten notes:
 H2O IN 1/2\"/>

1/2" X .049" WALL SMLS 316SS TUBING
 Requires sample stand (2-3 High)

THIS DRAWING IS THE EXCLUSIVE PROPERTY OF SOR. NO USE WHATSOEVER OF THE INFORMATION CONTAINED HEREON, NOR REPRODUCTION IN WHOLE OR PART MAY BE MADE WITHOUT THE EXPRESS WRITTEN PERMISSION OF SOR.

TOLERANCES: (UNLESS OTHERWISE SPECIFIED)
 FRACTIONS: +/- .1/8"
 ALL DIMENSIONS ARE IN INCHES
 NO BURRS OR SHARP EDGES

DRAWN BY: MPO
 CHECKED BY: ENGINEER APPROVAL

5175 Ashley Court
 Houston, Texas 77041
 913-888-2630 SORINC.COM

TITLE		BSS SAMPLE SYSTEM	
MATERIAL		DATE	REV
SS	W/O RETURN	4-2-19	4
SCALE	DRAWING NUMBER	DWG SIZE	
NTS	SSO-0034SE	A	
DO NOT SCALE PRINT			