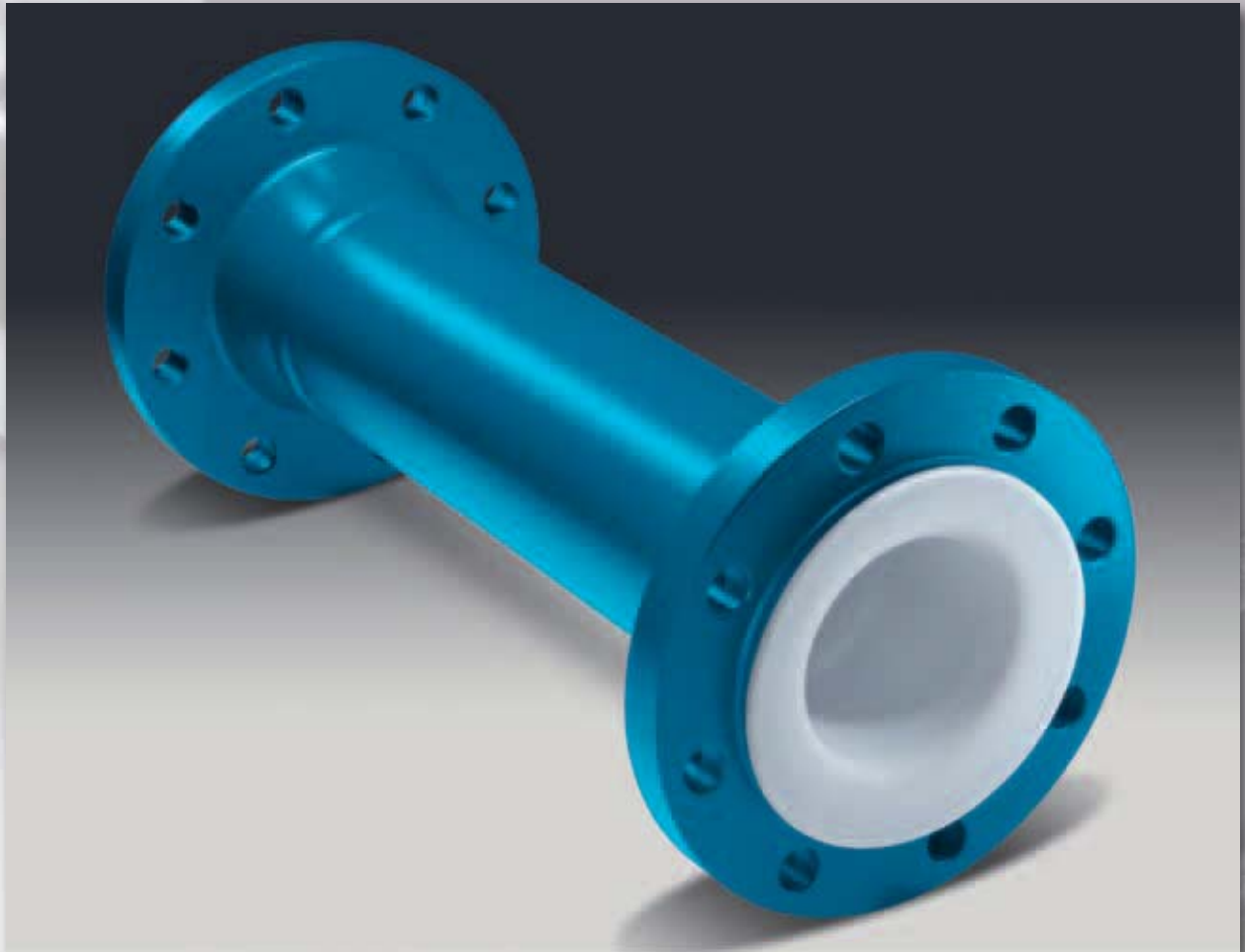


Pipes (Class 150)

Our pipes are lined, totally stainless, with paste-extruded PTFE and fully automatically tested. We produce pipes up to a length of 6 metres.



Lined Pipes (Class 150)

Lining material:

- PTFE (virgin or conductive)
- PP (up to nominal pipe size NPS 10", except NPS 1/2" and NPS 3/4")

Different lining thicknesses on request.

Flange design:

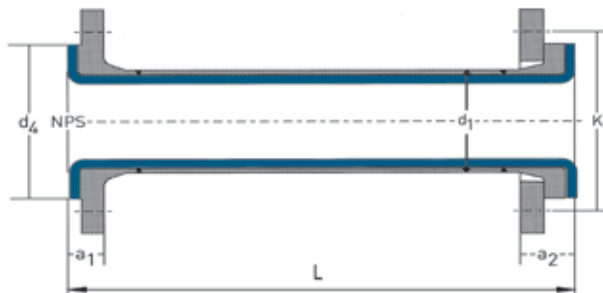
- fix-loose
- fix-fix
- loose-loose

Other pressure rates:

- Class 300

Material: carbon steel and stainless steel

Special features: earthing studs, earthing lugs, flange stopper, field flaring pipes, final painting.



| NPS | L (mm) | | d ₁ (mm) | d ₄ (mm) | K (mm) | a ₁ (mm) | a ₂ (mm) | no. of bolts x thread | Weights | |
|--------|--------|------|------------------------|------------------------|-----------|------------------------|------------------------|-----------------------------|--------------------|--------------------------------|
| | max. | min. | | | | | | | Pipe (ca. kg/m) | Pair of flanges (ca. kg) |
| 1/2" | 6000 | 65 | 21,3 | 35,1 | 60,5 | 14,2 | 24,2 | 4 x 1/2" UNC | 1,2 | 1,5 |
| 3/4" | 6000 | 75 | 26,7 | 42,9 | 69,9 | 15,7 | 27,7 | 4 x 1/2" UNC | 1,6 | 2,0 |
| 1" | 6000 | 75 | 33,4 | 50,8 | 79,2 | 17,2 | 29,2 | 4 x 1/2" UNC | 2,5 | 2,5 |
| 1 1/4" | 6000 | 80 | 42,2 | 63,5 | 88,9 | 18,7 | 30,2 | 4 x 1/2" UNC | 3,4 | 3,6 |
| 1 1/2" | 6000 | 80 | 48,3 | 73,2 | 98,6 | 20,5 | 32,5 | 4 x 1/2" UNC | 4,5 | 4,2 |
| 2" | 6000 | 90 | 60,3 | 91,9 | 120,7 | 22,1 | 37,1 | 4 x 5/8" UNC | 5,8 | 5,5 |
| 2 1/2" | 6000 | 90 | 73,0 | 104,6 | 139,7 | 25,4 | 40,4 | 4 x 5/8" UNC | 7,1 | 7,2 |
| 3" | 6000 | 100 | 88,9 | 127,0 | 152,4 | 27,9 | 42,9 | 4 x 5/8" UNC | 11,0 | 9,3 |
| 4" | 6000 | 100 | 114,3 | 157,2 | 190,5 | 28,9 | 43,9 | 8 x 5/8" UNC | 16,0 | 13,6 |
| 5" | 6000 | 100 | 141,3 | 185,7 | 215,9 | 28,9 | 43,9 | 8 x 3/4" UNC | 22,0 | 17,2 |
| 6" | 6000 | 100 | 168,3 | 215,9 | 241,3 | 30,4 | 45,4 | 8 x 3/4" UNC | 28,0 | 21,8 |
| 8" | 6000 | 120 | 219,1 | 269,7 | 298,5 | 33,4 | 48,4 | 8 x 3/4" UNC | 43,0 | 38,4 |
| 10" | 4000 | 130 | 273,0 | 323,9 | 362,0 | 35,7 | 50,7 | 12 x 7/8" UNC | 60,0 | 47,2 |
| 12" | 3000 | 130 | 323,8 | 381,0 | 431,8 | 37,8 | 52,8 | 12 x 7/8" UNC | 74,0 | 72,6 |
| 14" | 3000 | 130 | 355,6 | 412,8 | 476,3 | 41,0 | 56,0 | 12 x 1" UNC | 81,0 | 100,0 |
| 16" | 3000 | 130 | 406,4 | 469,9 | 539,8 | 42,6 | 57,6 | 16 x 1" UNC | 93,0 | 128,0 |
| 18" | 3000 | 130 | 457,2 | 533,4 | 577,9 | 45,6 | 60,6 | 16 x 1 1/8" UNC | 104,0 | 145,0 |
| 20" | 3000 | 140 | 508,0 | 584,2 | 635,0 | 47,9 | 62,6 | 20 x 1 1/8" UNC | 123,0 | 177,0 |

| NPS | Standard | Lining thickness (mm) | Possible vacuum | | |
|--------|----------|--------------------------|-----------------|--------|--------|
| | | | 23° C | 100° C | 230° C |
| 1" | ● | 3 | Full | Full | Full |
| | | 4 | Full | Full | Full |
| 1 1/2" | ● | 3 | Full | Full | Full |
| | | 4 | Full | Full | Full |
| 2" | ● | 3 | Full | Full | Full |
| | | 4 | Full | Full | Full |
| 3" | ● | 3 | Full | Full | Full |
| | | 4 | Full | Full | Full |
| 4" | ● | 3 | Full | Full | Full |
| | | 4,5 | Full | Full | Full |
| 6" | ● | 5 | Full | Full | Full |
| | | 6 | Full | Full | Full |
| 8" | ● | 5 | Full | Full | Full |
| | | 6 | Full | Full | Full |
| 10" | ● | 5 | Full | Full | Full |
| | | 7,5 | Full | Full | Full |
| 12" | ● | 5 | Full | Full | Full |
| | | 7,5 | Full | Full | Full |

L = Total length

d₁ = Outer diameter of the pipe



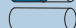
d₄ = Flaring diameter

K = Bolt circle

a₁ = Length with fixed flange (standard lining)

a₂ = Length with loose flange (standard lining)

Vacuum resistance:

-  = full vacuum
-  = limited vacuum
-  = no vacuum

Please refer to the next nominal pipe size if your nominal pipe size is not listed.